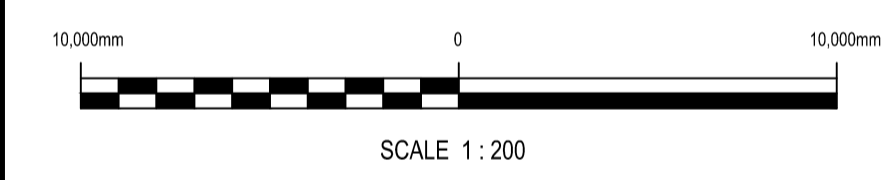


**LEGEND**

- EXISTING FOUL SEWER - - -
- EXISTING STORM SEWER - - -
- EXISTING COMBINED SEWER - - -
- EXISTING OVERFLOW SEWER - - -
- EXISTING KERB LINE
- RED LINE BOUNDARY
- EXISTING GULLY  GY
- NEW GULLY  G
- NEW STORM SEWER CONNECTION —
- HYDRANT  FH



REV	DATE	DESCRIPTION	D	C	A
B	27.10.23	MINOR REVISIONS, REMOVAL OF BLUE TEXT	A.M.C.	D.R.	T.H.
A	06.10.23	FIRST ISSUE	A.M.C.	D.R.	T.H.

PROJECT No.	STAGE
<b>533272</b>	<b>PRELIMINARY</b>

**COPYRIGHT RESERVED** - THIS DRAWING IS NOT TO BE USED FOR A PURPOSE OTHER THAN THAT FOR WHICH IT HAS BEEN ISSUED BY NICHOLAS O'DWYER LTD. NOR IS IT TO BE COPIED OR REPRODUCED IN ANY MANNER WITHOUT WRITTEN CONSENT.

15 Downshire Road,  
Newry, BT34 1EE,  
Northern Ireland  
T +44 (0)28 3026 6915  
E newry@nodwyer.com  
W www.nodwyer.com  
an RSK company

CLIENT  
**LOUTH COUNTY COUNCIL**

PROJECT  
**WESTGATE 2040**

TITLE  
**DRAINAGE PLAN  
SHEET 4 OF 6**

SCALES @ A1	DRAWN	CHECKED	APPROVED
1:200	P. McDONALD	D. REDDY	T. HOLOHAN
	DATE	DATE	DATE
	06.10.2023	06.10.2023	06.10.2023

SUITABILITY CODE	SUITABILITY DESCRIPTION
<b>S1</b>	<b>PLANNING</b>

DRAWING No.	REVISION
<b>LOUX3001-P-000-404</b>	<b>B</b>